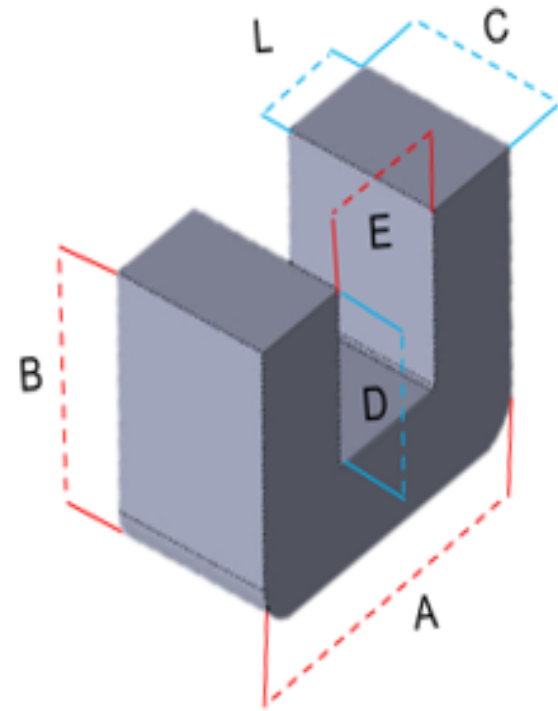


6. UU Core



S 55 28 108 C UU

- Core shape: UU type core
- Perm (μ): B:26, J:40, X:50, C:60, D:75, E:90
- Inductance: Apparent inductance (mH) factor for 1,000 turns
- [B] Size: Horizontal axis of cores [mm]
- [A] Size: Vertical axis of cores [mm]
- Material: S:sendust, H:high flux, W:power flux, U:ultra flux

P/N	Dimensions(mm)						Path Length (cm)	Cross section Area(cm ²)	AL value (nH/n ²) \pm 12%			
	A	B	C	D	E	L			26u	40u	60u	90u
2205 UU	22	4.7	22	1	14	4	4.41	0.83	61	94	142	
2206 UU	22	5.5	22	1.8	14	4	4.73	0.83	57	88	133	
3536 UU	35	36	20	25	13	11	16.9	2.2	43	65	98	
3536 UU	35	36	25	25	13	11	16.9	2.75	53	82	123	
4141 UU	41	41	20	28	15	13	19.3	2.6	44	68	102	
5251 UU	52	51	25	35	20	16	24.3	4	54	83	124	
5528 UU	54.9	27.6	23.2	17	33.9	10.5	16.87	2.43	47	72	108	
7965 UU	79	65	35	42.5	35	22	30.71	7.7	82	126	189	

High Flux material is only available up to 90 μ .