

Epowell GP

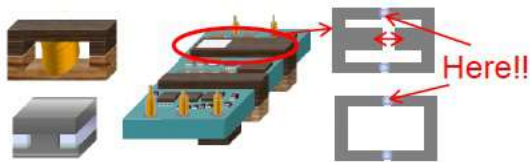
Epowell based thermo-set resin contains **very uniform** size plastic spacers. It can support to design inductance **easily, accurately** for any types of core.

Sekisui Epowell GP is able to...

- 1) design your products easily
- 2) small tolerance
- 3) make smaller(thinner) products
- 4) increase productivity
- 5) use various types of ferrite core

Application

Inductor, DC-DC converter etc.



→Adhesive for Inductor and Trans

Features

- Easy process : Reduce Product process (Go to page 4)
- Accurate Gap : Contains very uniform Particle (Go to page 6)
- Wide range of Gap : Line Ups are 3um~600um (Go to page 7)

Epowell GP ...

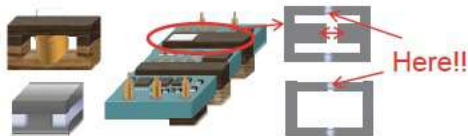
含有超高精度 Spacer、环氧系热硬化接着剂。
电感量性能可以简单·准确的得到控制，且适用于各种磁芯！

使用时优点

- 1) 电感值可以简单的控制！
- 2) 可降低电感值的公差！
- 3) 可制作更小更薄的产品
- 4) 可提升生产效率
- 5) 无需挑选磁芯形状

用途·使用位置

Inductor, DC-DC converter etc



→Adhesive for Inductor and Trans

主要特征

- ①可准确控制 GAP：使用CV值 7%以下高精度高精度 Spacer
- ②丰富产品尺寸：10um ~ 600um 均可以准确的控制 GAP
- ③削减生产工序：胶水与 Spacer 混合品、无需复杂工程
- ④使用高可靠性树脂：使用在电感市场有量产实绩环氧树脂

| 平均粒子径(μm) | CV |
|------------------------|--------|
| 10 \pm 0.1 | 3~5%以下 |
| 15 \pm 0.1 | |
| 20 \pm 0.15 | |
| 25 \pm 0.2 | |
| 30 \pm 0.25 | |
| 50 \pm 0.5 | |
| 75 \pm 0.5 | |
| 100 \pm 1 | |
| 110 \pm 1 | |

研磨不可
对应领域

| 平均粒子径(μm) | CV |
|------------------------|------|
| 40 \pm 2 | 7%以下 |
| 50 \pm 2.5 | |
| 60 \pm 3 | |
| 70 \pm 3.5 | |
| 80 \pm 4 | |
| 90 \pm 4.5 | |
| 100 \pm 5.5 | |
| 120 \pm 6 | |
| 130 \pm 6.5 | |
| 140 \pm 7.0 | |

| 平均粒子径(μm) | CV |
|------------------------|------|
| 150 \pm 5 | 3%以下 |
| 160 \pm 5 | |
| 170 \pm 5 | |
| 180 \pm 5 | |
| 190 \pm 5 | |
| 200 \pm 5 | |
| 210 \pm 5 | |
| 220 \pm 5 | |
| 230 \pm 5 | |
| 240 \pm 5 | |
| 250 \pm 5 | |
| 300 \pm 5 | |
| 325 \pm 5 | |
| 350 \pm 5 | |
| 375 \pm 5 | |

| 平均粒子径(μm) | CV |
|------------------------|------|
| 400 \pm 10 | 5%以下 |
| 425 \pm 10 | |
| 450 \pm 10 | |
| 475 \pm 10 | |
| 500 \pm 10 | |
| 525 \pm 10 | |
| 550 \pm 10 | |
| 575 \pm 10 | |
| 600 \pm 10 | |